



Delta Virtual COM Port Driver

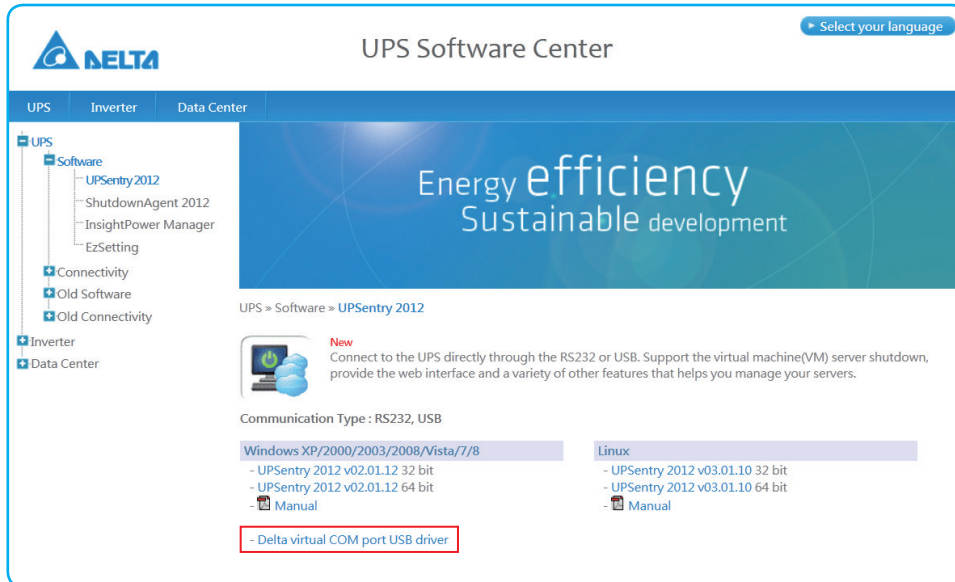
User Manual

Doc. Version 00.00

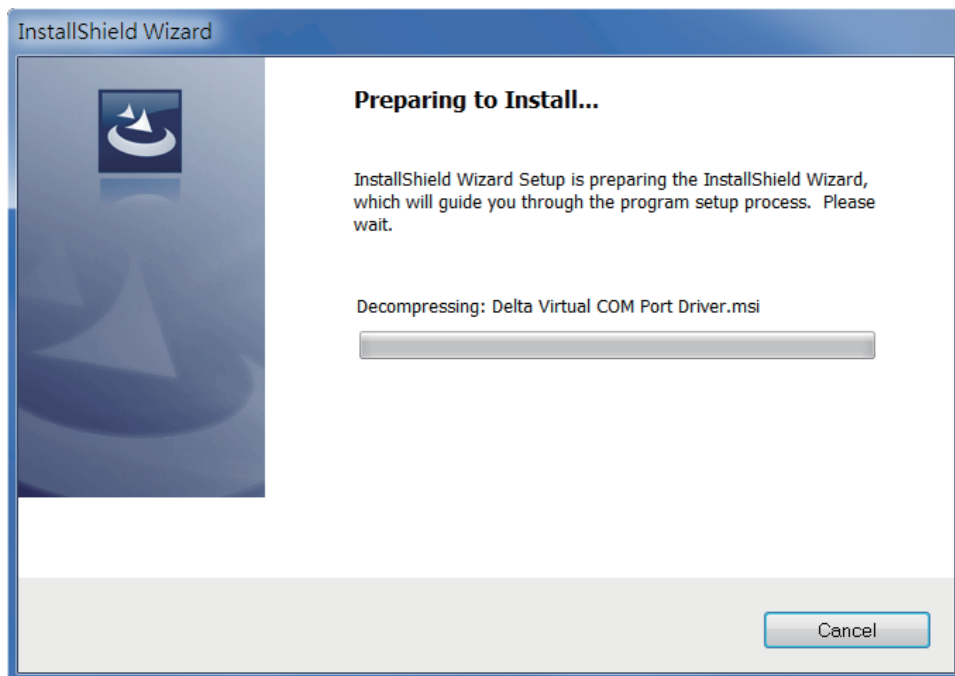
Date: 04/30/2015

Installation Steps

1. Click 'Delta virtual COM port USB driver'.



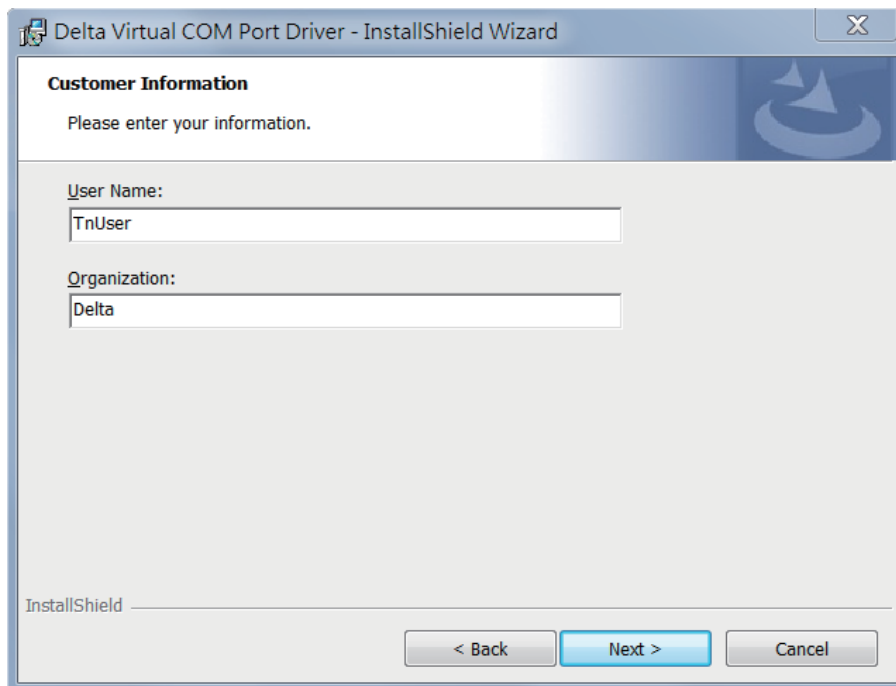
2. Execute 'Delta Virtual COM Port Driver.exe' and the following screen appears.



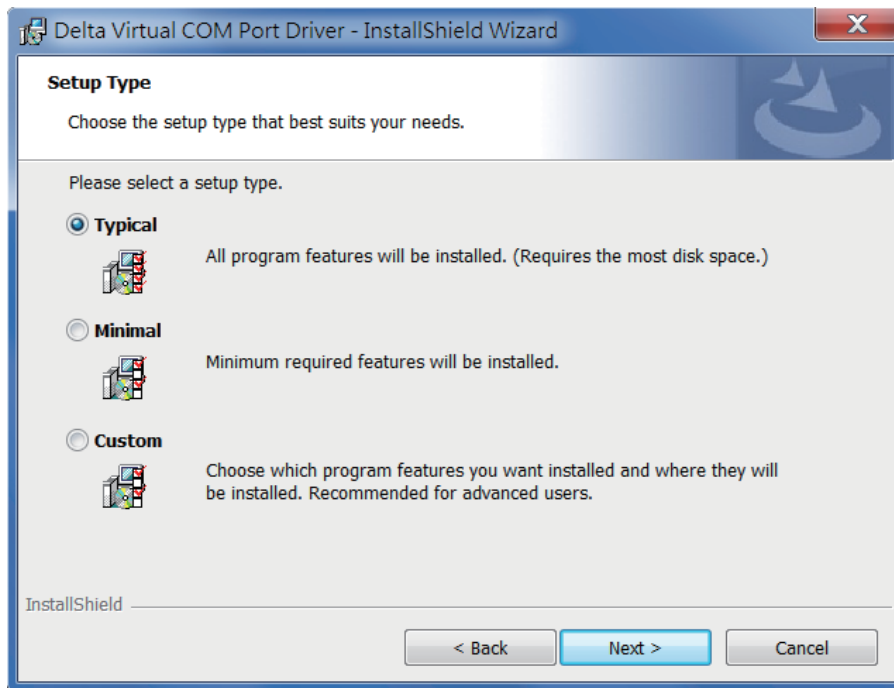
3. Click 'Next'.



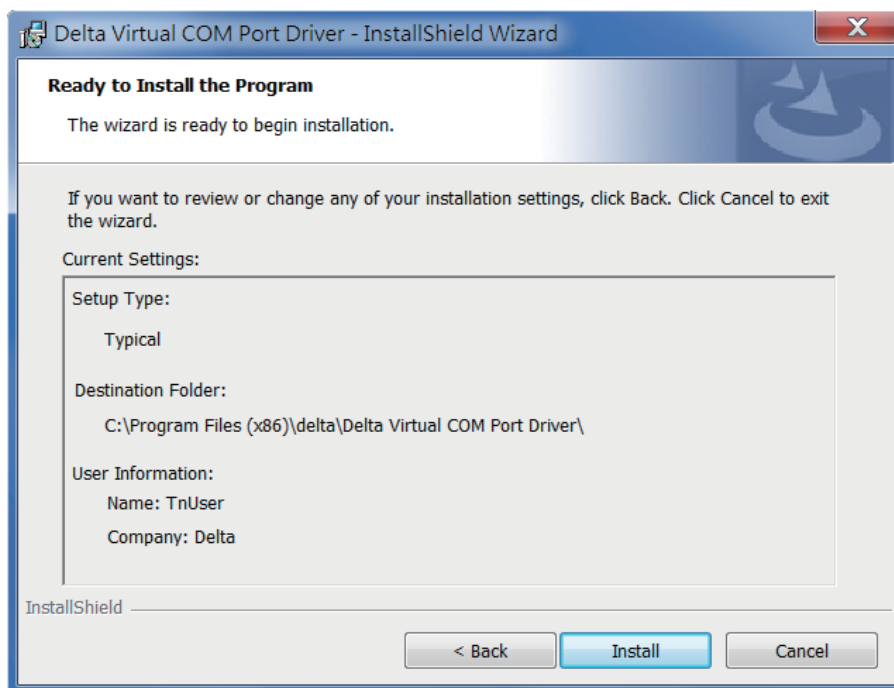
4. For **User Name** and **Organization**, please key in 'TnUser' and 'Delta'. After that, click 'Next'.



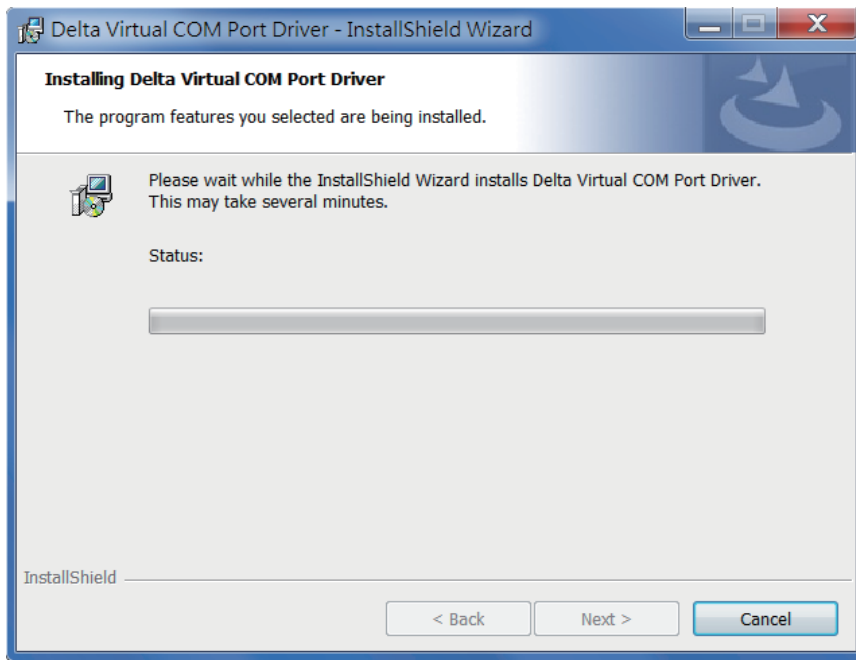
5. Select a setup type ('Typical' is suggested). After you confirm your selection, please click 'Next'.



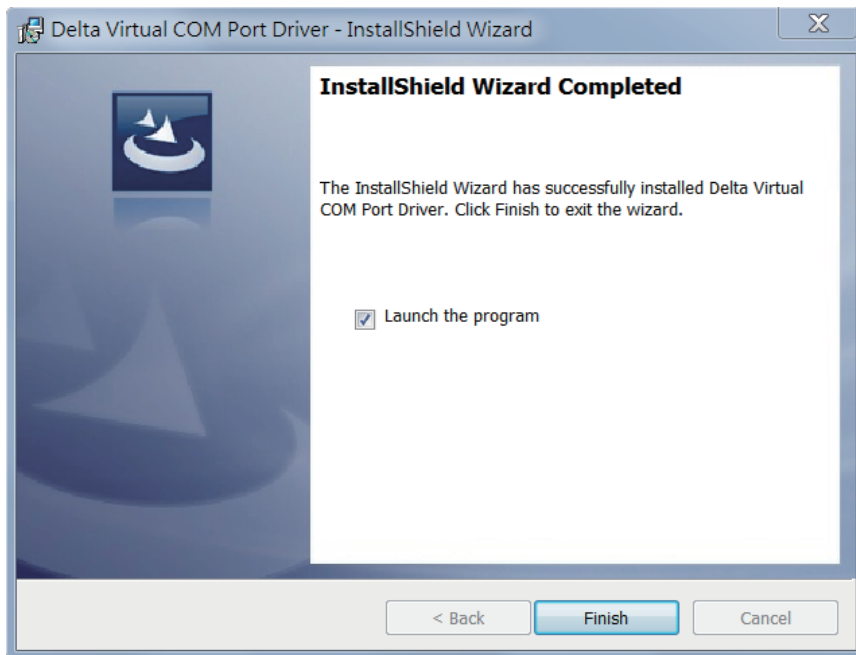
6. If you are ready to install the program, please click 'Install'. Otherwise, click 'Back' to review or change any of your installation settings, or click 'Cancel' to exit the wizard.



7. It may take several minutes to finish the installation.






8. Check the box to 'Launch the program' and click 'Finish'. Now, the installation is completed.



NOTE: If you don't use the 32-bit operating system, please follow the route below to search the corresponding driver.

C:\ProgramData\Microsoft\Windows\Start Menu\Programs\delta\Delta Virtual COM Port Driver

-  Launch dpinst_amd64.exe
-  Launch dpinst_ia64.exe
-  Launch dpinst_x86.exe